

SCHEDA TECNICA

XM35 FLOOR PREPARATION LP INDUSTRIAL VACUUM

ASPIRATORI INDUSTRIALI WET&DRY MONOFASE, ASPIRATORI INDUSTRIALI PER POLVERI TOSSICHE E PERICOLOSE, ACCESSORI

The **XM35 Floor Preparation** is a **dust extractor** from the **Depureco** line that has been designed for the extraction of **floor sanding dust**. The **vacuum cleaner** can be connected to the **sanding machine** to **vacuum directly the dust generated**, ensuring **air quality** and the **health of the operator**. Inside the **suction chamber**, there is a **conical cartridge filter** with a large filtering surface (35,000 cm²), surrounded by a metal cylinder, excellent for **stopping concrete dust** while **protecting the filter**. This unit features special oversized rubber wheels to provide **unmatched ease of movement**. The ease of movement is also accentuated by the practical **telescopic system** that allows the machine to be compacted, reducing its size, **to facilitate transport**. The **vacuum cleaner** can be equipped with a 45 Lt **painted steel container** or with a practical **Longopac system** with an endless bag.



POTENZA
2.6 kW



SUPERFICIE
35.000 cm²



CAPACITÀ
Longopac Lt

HIGHLIGHTS

SUCTION UNIT



The vacuum is generated by 2 by-pass motors. Each motor is managed by an independent switch, permitting the operator to control the intake performance. The motors are located in a sturdy casing, with an insulating sponge to maintain a low noise level.



FILTERING ELEMENT

The filtration is guaranteed by a sturdy polyester filtering cartridge. The cartridge is made to ensure large filter surface (35.000 cm²) in a compact space. This way air can pass through when the filter is dirty too. The filter is M Class (BIA | EN 60335-2-69) certified. It stops the particles till 1 micron, preserving the motors and the operator.

VIBRO CLEANING SYSTEM



A filter cartridge cleaning system by vibration that maintains maximum suction efficiency even after prolonged use of compact machines, without the need for operator intervention.



LONGOPAC®

The vacuumed material is collected inside a durable plastic bag named Longopac® which is 20 mt. long. The bag is rolled up under the filter chamber and is adjustable for every need. The operator, once the bag is full, will seal the bag by closing it above the collected material, which falls automatically inside the bag during the vacuuming operations. The full part of the bag can subsequently be cut off and disposed of, in total safety, without any contact occurring between the operator and the material.

DATI TECNICI

MOTORE

Tipologia	BY-PASS
Voltaggio	230V
Massimo vuoto	250mBar
Massima portata d'aria	380m ³ /h
Livello di rumorosità	72dB(A)
Motori	2
Frequenza	50/60Hz
Potenza	3.5HP

FILTRO PRIMARIO

Tipologia	cartridge
Classe EN 60335-2-69	M Class
Media	antistatic polyester
Pulizia filtro	Vibration
Efficienza filtrante (IFA)	IFA/BGIA M-PES AL

MACCHINA

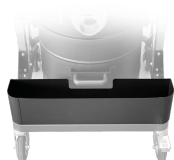
Bocca aspirante	50Ø mm
Dimensioni	585 x 545mm
Altezza	1.395mm
Peso	45Kg

OPZIONI

MEDIA FILTRANTE DISPONIBILE

HEPA 13

Filtro assoluto (EN 1822)
 35.000 cm² superficie filtrante
 Classe H13 (EN 1822)
 Fibra di vetro

OPZIONI
ALTRE OPZIONI

AB

Cassetta porta accessori


BX

Contenitore in acciaio INOX AISI 304


GRD

Messa a terra

ACCESSORI

P12348
DRY KIT Ø 50MM

Kit completo di accessori specifici per aspirazione polveri e solidi in diametro 50 mm


P12348
DRY KIT Ø 50MM

Kit completo di accessori specifici per aspirazione polveri e solidi in diametro 50 mm


P12348
DRY KIT Ø 50MM

Kit completo di accessori specifici per aspirazione polveri e solidi in diametro 50 mm