

SCHEDA TECNICA

BF 085 INDUSTRIAL VACUUM

ASPIRATORI INDUSTRIALI PER SFRIDI, CONFEZIONAMENTO E OEM

The BF 085 is a compact, stationary industrial vacuum cleaner for on-board suction. Its compact size allows easy installation even in tight places. Vacuum is generated by a three-phase side channel turbine that provides 24/7 maintenance-free service. The polyester star filter can be installed in an antistatic or PTFE-coated version, depending on the type of material to be vacuumed. The metal nozzle, equipped with a sturdy internal baffle, protects and enables long filter life. A collection container facilitates the collection of the sucked material and its subsequent disposal.

**POTENZA**
0,85 kW**CAPACITÀ**
30 Lt

HIGHLIGHTS



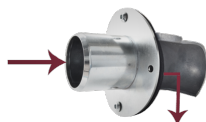
SUCTION UNIT

The suction unit is a side channel blower with direct coupling between motor and impeller. The side channel blower is equipped with a safety valve to guarantee continued work in complete safety, without any maintenance. The blower is also equipped with a metal silencer to maintain a low noise level.



FILTERING ELEMENT

Filtration is provided by a polyester filter. The star shape allows air to pass through even when the filter is dirty. The filter fabric is class M (BIA | EN 60335-2-69). This means that all particles down to 1 micron are stopped by the filter, so motors and the operator are protected.



INLET WITH DEFLECTOR

At the front of the chamber is a metal nozzle that serves as an inlet point for sucked-in material. Inside it is a sturdy baffle which reduces the speed of the material, creating a cyclonic effect inside the container. With this system, a longer filter life is guaranteed while decreasing the likelihood of clogging.



ELECTRIC PLUG

The robust plug provided as standard with the vacuum is certified IP 55 and is equipped with a practical phase inversion system which can be activated through a simple screwdriver turn.

DATI TECNICI

MOTORE

Voltaggio	400V
IP	55
Vuoto in continuo	160mBar
Massima portata d'aria	150m3/h
Livello di rumorosità	64dB(A)
Frequenza	50/60Hz
Potenza	1,2HP
Classe di isolamento	F

MACCHINA

Bocca aspirante	50Ø mm
Dimensioni	410 x 730mm
Altezza	350mm
Peso	42Kg