

SCHEDA TECNICA

BF 220 INDUSTRIAL VACUUM

ASPIRATORI INDUSTRIALI PER SFRIDI, CONFEZIONAMENTO E OEM

The BF 220 is a compact, stationary industrial vacuum cleaner for on-board suction. Its compact size allows easy installation even in tight places. Vacuum is generated by a three-phase side channel turbine that provides 24/7 maintenance-free service. The polyester star filter can be installed in an antistatic or PTFE-coated version, depending on the type of material to be vacuumed. The metal nozzle, equipped with a sturdy internal baffle, protects and enables long filter life. A collection container facilitates the collection of the sucked material and its subsequent disposal.

**POTENZA**
2,2 kW**SUPERFICIE**
15.000 cm²**CAPACITÀ**
30 Lt

HIGHLIGHTS



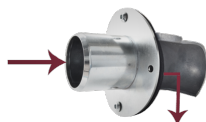
SUCTION UNIT

The suction unit is a side channel blower with direct coupling between motor and impeller. The side channel blower is equipped with a safety valve to guarantee continued work in complete safety, without any maintenance. The blower is also equipped with a metal silencer to maintain a low noise level.



FILTERING ELEMENT

The filtration is guaranteed by a sturdy polyester filter.



INLET WITH DEFLECTOR

On the front part of the machine a metal nozzle acts as the point of entrance for the vacuumed material. The deflector inside it reduces the speed of the material, creating that way a cyclone effect inside the bin. This way a longer life for the filter is guaranteed and clogging probability far decreased.



ELECTRIC PLUG

The robust plug provided as standard with the vacuum is certified IP 55 and is equipped with a practical phase inversion system which can be activated through a simple screwdriver turn.

DATI TECNICI

MOTORE

Voltaggio	400V
IP	55
Vuoto in continuo	120mBar
Massima portata d'aria	320m3/h
Livello di rumorosità	69dB(A)
Frequenza	50/60Hz
Potenza	3HP
Classe di isolamento	F

MACCHINA

Bocca aspirante	50Ø mm
Dimensioni	410 x 730mm
Altezza	350mm
Peso	42Kg