

SINGLE-PHASE WET&DRY INDUSTRIAL VACUUM CLEANERS

# M100 JC TAN

## CYCLONIC INDUSTRIAL VACUUM



Watch the video!



**POWER**  
3,9 kW - 5,2 HP



**APPLICATION**  
Fine, dry and clogging  
powders

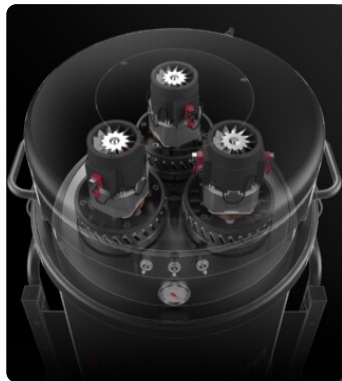


**CAPACITY**  
100 Lt

## FEATURES

- Powerful and reliable industrial steel vacuum cleaner
- Cyclonic effect and high surface area class M filter
- Ideal for vacuuming up fine dust
- Multiple construction options available

## HIGHLIGHTS



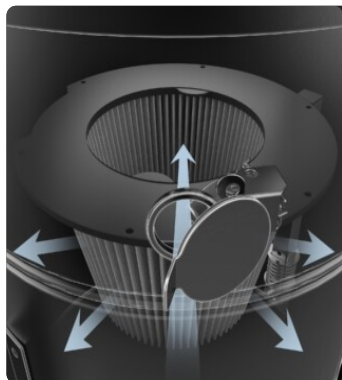
### SUCTION UNIT

Suction is provided by 3 by-pass motors operated by independent switches, allowing the operator to control suction performance. The motors are located inside a robust enclosure, with an insulating sponge to maintain a low noise level.



### FILTER UNIT

The tangential inlet facilitates the deposition of the sucked material in the container due to the cyclonic effect. Filtration is ensured by a polyester cartridge filter in class M (filtration efficiency 1 micron) with a high filtering surface area, which guarantees the passage of air even with a dirty filter.



### JET CLEAN FILTER CLEANING SYSTEM

Equipped with JetClean® filter cleaning system. Due to the different pressure between the outside and inside of the vacuum cleaner, the system generates a flow of air through the cartridge that detaches dust from the surface of the filter, keeping the filter efficient while working and without stopping suction.



### COLLECTION UNIT

The material is collected inside a coated container complete with a handle that allows its release. Thanks to the 4 sturdy pivoting wheels, the container can be moved with ease, and the collected material can then be disposed of.

## TECHNICAL DATA

### MOTOR

Typologies	By-pass
Power	3,9 kW - 5,2 HP
Frequency	50/60 Hz
Voltage	230 V
Vacuum in continuous run	250 mBar
Maximum air flow	570 m3/h
Noise level	72 dB(A)

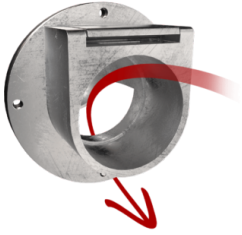
### MACHINE

Suction inlet	70 Ø mm
Collection system	Steel container
Capacity	100 Lt
Dimensions	660 x 800 mm
Height	1515 mm
Weight	80 Kg

### FILTRATION

Primary filter type	Cartridge
Filter surface	35000 cm2
EN 60335-2-69 filtration class	M
Media	PTFE coated polyester
Filter Cleaning System	Jet Clean
JetClean Guillotine	Included

## FEATURES



**DEFLECTOR**  
Internal deflector to protect the filter



**PUSH HANDLE**



**SHUKO TYPE PLUG**



**VACUUM GAUGE**  
Vacuum gauge for indication of filter clogged or in need of replacement



**POWER SUPPLY CABLE**



**WHEEL WITH BRAKE**  
Non-marking wheel with integrated brake



**WHEELS**  
Non-marking pivoting wheels



**STEEL CONSTRUCTION**  
Rugged industrial coated steel construction



**SD**  
Sliding damper



**JC**  
Jet Clean

## OPTIONS

### AVAILABLE FILTER MEDIA



#### HEPA 13

Absolute filter (EN 1822)  
35.000 cm² filter surface  
H13 Class Filter (EN 1822)  
Glass fiber



#### HEPA 14

Absolute filter (EN 1822)  
22.000 cm² filter surface  
H14 Class Filter (EN 1822)  
Glass fiber

### STRUCTURE AND OPTIONS

# 60<sup>Hz</sup>

#### 60HZ

Available in 60Hz version



#### 3 YEARS WARRANTY

Purchasing the replacement filter along with the vacuum



#### RC SCHUKO

Remote control by power tool (MAX 2000 W)



#### LP

Endless Bag continuous roll collection system



#### KDP

Differential pressure KIT for bag



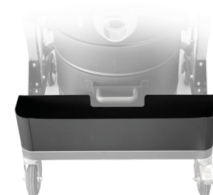
#### GRD

Grounding



#### BX

Stainless steel bin AISI 304



#### AB

Accessories basket



#### CONTAINER EMPTYING KIT

System for easy container emptying using forklift lifting.

## ACCESSORIES



**P13638**  
**STARTER KIT Ø 40MM**  
 Basic kit containing specific accessories for 40 mm diameter solids and liquids vacuuming



**P12350**  
**STARTER KIT Ø 50MM**  
 Basic kit containing specific accessories for 50 mm diameter solids and liquids vacuuming



**P13640**  
**DRY KIT Ø 40MM**  
 Kit containing specific accessories for 40 mm diameter dust and solids vacuuming



**P12348**  
**DRY KIT Ø 50MM**  
 Kit containing specific accessories for 50 mm diameter dust and solids vacuuming



**P13639**  
**WET & DRY KIT Ø 40MM**  
 Kit containing specific accessories for 40 mm diameter solids and liquids vacuuming



**P11887**  
**WET & DRY KIT Ø 50MM**  
 Kit containing specific accessories for 50 mm diameter solids and liquids vacuuming