

SINGLE-PHASE WET&DRY INDUSTRIAL VACUUM CLEANERS

XM35 JC LP

INDUSTRIAL VACUUM FOR SURFACE PREPARATION



Watch the video!



POWER
2,6 kW - 3,5 HP



APPLICATION
Toxic or hazardous dusts



COLLECTION SYSTEM
Endless bag

FEATURES

- Designed for fine dust extraction
- Compact and easy to handle
- Large surface area M-class filter with integrated Jet Clean cleaning
- Endless Bag collection to avoid contact with dust

HIGHLIGHTS



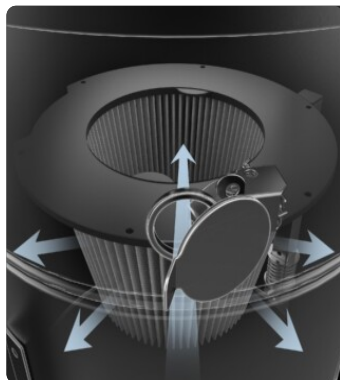
SUCTION UNIT

Suction is provided by 2 by-pass motors controlled by independent switches, allowing the operator to control suction performance. The motors are located inside a robust enclosure, with an insulating sponge to maintain a low noise level.



FILTER UNIT

Filtration is ensured by a Class M polyester cartridge filter (filtration efficiency 1 micron) with a high filtering surface area, which guarantees air passage even with a dirty filter.



JET CLEAN FILTER CLEANING SYSTEM

Equipped with JetClean® filter cleaning system. Due to the different pressure between the outside and inside of the vacuum cleaner, the system generates a flow of air through the cartridge that detaches dust from the surface of the filter, keeping the filter efficient while working and without stopping suction.



COLLECTION UNIT

The material is collected inside a coated bin complete with a handle that allows it to be released. Thanks to the 4 sturdy pivoting wheels, the container can be moved with ease and the collected material can then be disposed of.

TECHNICAL DATA

MOTOR

| | |
|--------------------------|-----------------|
| Typologies | By-pass |
| Power | 2,6 kW - 3,5 HP |
| Frequency | 50/60 Hz |
| Voltage | 230 V |
| Vacuum in continuous run | 250 mBar |
| Maximum air flow | 380 m3/h |
| Noise level | 72 dB(A) |

MACHINE

| | |
|-------------------|--------------|
| Suction inlet | 50 Ø mm |
| Collection system | Endless Bag |
| Dimensions | 585 x 545 mm |
| Height | 1395 mm |
| Weight | 45 Kg |

FILTRATION

| | |
|--------------------------------|-----------------------|
| Primary filter type | Cartridge |
| Filter surface | 35000 cm2 |
| EN 60335-2-69 filtration class | M |
| Media | PTFE coated polyester |
| Filter Cleaning System | Jet Clean |
| JetClean Guillotine | Included |

FEATURES



FILTER CLOGGING INDICATOR

Filter clogged or need to be replaced indicator light



SHUKO TYPE PLUG



POWER SUPPLY CABLE



PUSH HANDLE



WHEEL WITH BRAKE

Non-marking wheel with integrated brake



WHEELS

Non-marking pivoting wheels



STEEL CONSTRUCTION

Rugged industrial coated steel construction

OPTIONS

AVAILABLE FILTER MEDIA



HEPA 14

Absolute filter (EN 1822)
22.000 cm² filter surface
H14 Class Filter (EN 1822)
Glass fiber



HEPA 13

Absolute filter (EN 1822)
35.000 cm² filter surface
H13 Class Filter (EN 1822)
Glass fiber

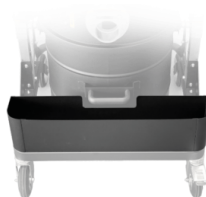
STRUCTURE AND OPTIONS

60^{Hz}

60HZ
Available in 60Hz version



3 YEARS WARRANTY
Purchasing the replacement filter along with the vacuum



AB
Accessories basket



RC SCHUKO
Remote control by power tool (MAX 2000 W)



GRD
Grounding

ACCESSORIES



P12350
STARTER KIT Ø 50MM
Basic kit containing specific accessories for 50 mm diameter solids and liquids vacuuming



P12348
DRY KIT Ø 50MM
Kit containing specific accessories for 50 mm diameter dust and solids vacuuming



P13640
DRY KIT Ø 40MM
Kit containing specific accessories for 40 mm diameter dust and solids vacuuming



P13638
STARTER KIT Ø 40MM
Basic kit containing specific accessories for 40 mm diameter solids and liquids vacuuming