

ATEX AND ACD VACUUM CLEANERS

BL 20 JC 3D Z22

ATEX PORTABLE INDUSTRIAL VACUUM CLEANER



Watch the video!



POWER
1,1 kW - 1,5 HP



APPLICATION
Fine, dry and clogging
powders

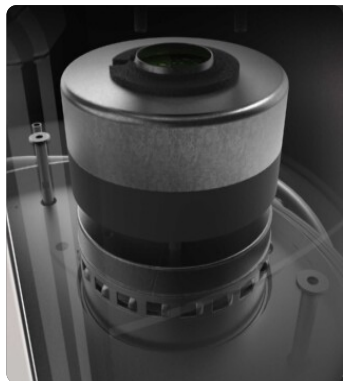


CAPACITY
20Lt

FEATURES

- Suitable and safe for intensive work in Atex 22 zones
- Compact, robust and easy to handle
- Brushless motor, anti-static filtration and complete grounding for maximum safety
- High-efficiency filtration with built-in semi-automatic cleaning system

HIGHLIGHTS



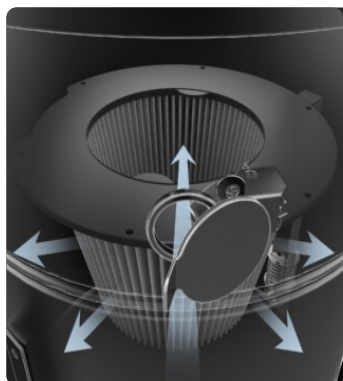
SUCTION UNIT

The vacuum unit is a powerful Brushless motor, suitable for continuous work. Two filters are installed on the vacuum cleaner head: one to protect the motor and the other placed on the air outlet. The air that comes out is totally filtered



FILTER UNIT

Filtration is ensured by a Class M polyester cartridge filter (filtration efficiency 1 micron) with a high filtering surface area, which guarantees air passage even with a dirty filter.



JET CLEAN FILTER CLEANING SYSTEM

Equipped with JetClean® filter cleaning system. Due to the different pressure between the outside and inside of the vacuum cleaner, the system generates a flow of air through the cartridge that detaches dust from the surface of the filter, keeping the filter efficient while working and without stopping suction.



COLLECTION UNIT

The material is collected inside an AISI 304 stainless steel container, complete with a metal handle that allows its release, to avoid any sparks that could be generated by the electrostatic charge.

TECHNICAL DATA

MOTOR

Typologies	Brushless
Power	1,1 kW - 1,5 HP
Frequency	50/60 Hz
Voltage	230 V
Vacuum in continuous run	230 mBar
Maximum air flow	220 m3/h
Noise level	72 dB(A)

MACHINE

Atex marking	II 3D Ex htc IIIB T140°C Dc
EX category	3D
Operating temperature	-10 / +40 C°
Suction inlet	50 Ø mm
Collection system	AISI304 stainless steel container
Capacity	20 Lt
Dimensions	516 x 545 mm
Height	1050 mm
Weight	38 Kg

FILTRATION

Primary filter type	Cartridge
Filter surface	35000 cm2
EN 60335-2-69 filtration class	M
Media	Antistatic polyester
Filter Cleaning System	Jet Clean
JetClean Guillotine	Included

FEATURES



DEFLECTOR
Internal deflector to protect the filter



PLUG
3-pin industrial plug



WHEEL WITH BRAKE
Non-marking wheel with integrated brake



VACUUM GAUGE
Vacuum gauge for indication of filter clogged or in need of replacement



POWER SUPPLY CABLE



GRD
Grounding



ATEX CERTIFICATION



SD
Sliding damper



JC
Jet Clean



BX
Stainless steel bin AISI 304



ANT M
Antistatic filter (M class EN 60335-2-69)

OPTIONS

AVAILABLE FILTER MEDIA



HEPA 14
Absolute filter (EN 1822-5)

STRUCTURE AND OPTIONS

60^{Hz}

60HZ
Available in 60Hz version



3 YEARS WARRANTY
Purchasing the replacement filter along with the vacuum

ACCESSORIES



P13642
ANTISTATIC KIT PRO Ø 40MM
Kit containing antistatic accessories for application with 40 mm diameter ATEX vacuum cleaner



P13641
ANTISTATIC STARTER KIT Ø 40MM
Basic kit containing antistatic accessories for application with 40 mm diameter ATEX vacuum cleaner