

ATEX AND ACD VACUUM CLEANERS

# BL 45 JC 3D Z22

## ATEX INDUSTRIAL VACUUM FOR FINE DUST



Watch the video!



**POWER**  
1,1 kW - 1,5 HP



**APPLICATION**  
Fine, dry and clogging  
powders

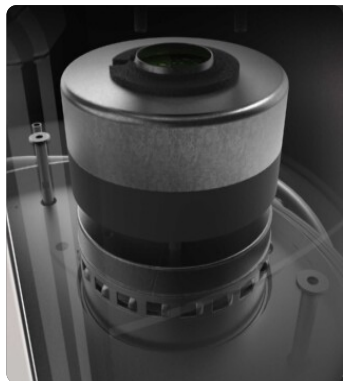


**CAPACITY**  
45Lt

## FEATURES

- Suitable and safe for intensive work in Atex 22 zones
- Compact, sturdy and easy to handle
- Brushless motor, antistatic filtration and full grounding for maximum safety.
- High-efficiency antistatic filtration with built-in semi-automatic cleaning system

## HIGHLIGHTS



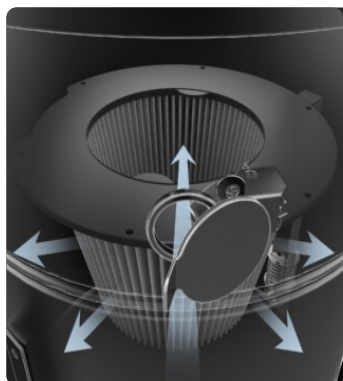
### SUCTION UNIT

The vacuum unit is a powerful Brushless motor, suitable for continuous work. Two filters are installed on the vacuum cleaner head: one to protect the motor and the other placed on the air outlet. The air that comes out is totally filtered



### FILTER UNIT

Filtration is ensured by a Class M polyester cartridge filter (filtration efficiency 1 micron) with a high filtering surface area, which guarantees air passage even with a dirty filter.



### JET CLEAN FILTER CLEANING SYSTEM

Equipped with JetClean® filter cleaning system. Due to the different pressure between the outside and inside of the vacuum cleaner, the system generates a flow of air through the cartridge that detaches dust from the surface of the filter, keeping the filter efficient while working and without stopping suction.



### COLLECTION UNIT

The material is collected inside an AISI 304 stainless steel container, complete with a metal handle that allows its release, to avoid any sparks that could be generated by the electrostatic charge.

## TECHNICAL DATA

### MOTOR

Typologies	Brushless
Power	1,1 kW - 1,5 HP
Frequency	50/60 Hz
Vacuum in continuous run	230 mBar
Maximum air flow	220 m3/h
Noise level	72 dB(A)

### MACHINE

Atex marking	II 3D Ex htc IIIB T140°C Dc
EX category	3D
Operating temperature	-10 / +40 C°
Suction inlet	50 Ø mm
Collection system	AISI304 stainless steel container
Capacity	45 Lt
Dimensions	550 x 620 mm
Height	1303 mm
Weight	45 Kg

### FILTRATION

Primary filter type	Cartridge
Filter surface	35000 cm2
EN 60335-2-69 filtration class	M
Media	Antistatic polyester
Filter Cleaning System	Jet Clean
JetClean Guillotine	Included

## FEATURES

**60<sup>Hz</sup>**

**60HZ**  
Available in 60Hz version



**3 YEARS WARRANTY**  
Purchasing the replacement filter along with the vacuum



**PUSH HANDLE**



**ATEX CERTIFICATION**



**PLUG**  
3-pin industrial plug



**POWER SUPPLY CABLE**



**WHEEL WITH BRAKE**  
Non-marking wheel with integrated brake



**SD**  
Sliding damper



**GRD**  
Grounding



**BX**  
Stainless steel bin AISI 304



**JC**  
Jet Clean



**ANT M**  
Antistatic filter (M class EN 60335-2-69)



**VACUUM GAUGE**  
Vacuum gauge for indication of filter clogged or in need of replacement

## OPTIONS

### AVAILABLE FILTER MEDIA



**HEPA 14**  
Absolute filter (EN 1822-5)

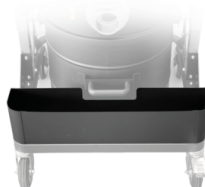
### STRUCTURE AND OPTIONS

**60<sup>Hz</sup>**

**60HZ**  
Available in 60Hz version



**3 YEARS WARRANTY**  
Purchasing the replacement filter along with the vacuum



**AB**  
Accessories basket

## ACCESSORIES



**P13641**  
**ANTISTATIC STARTER KIT Ø 40MM**  
Basic kit containing antistatic accessories for application with 40 mm diameter ATEX vacuum cleaner



**P13642**  
**ANTISTATIC KIT PRO Ø 40MM**  
Kit containing antistatic accessories for application with 40 mm diameter ATEX vacuum cleaner