

ATEX AND ACD VACUUM CLEANERS

XM 20 T T 3GD Z2-22

COMPACT PORTABLE INDUSTRIAL VACUUM CLEANER ATEX



POWER
2,2 kW - 3 HP



APPLICATION
Powders, solids and
shavings

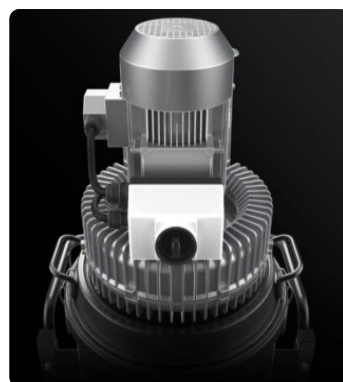


CAPACITY
20Lt

FEATURES

- Suitable and safe for intensive work in Atex zones 2 or 22
- Compact, sturdy and easy to handle
- Atex-certified side channel blower
- High-efficiency antistatic filtration with built-in semi-automatic cleaning system

HIGHLIGHTS



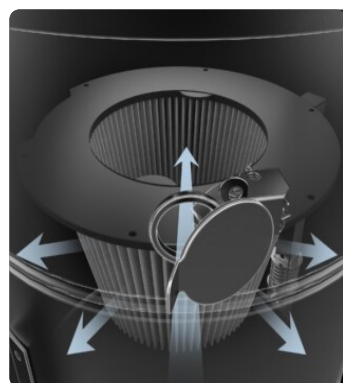
SUCTION UNIT

The suction unit is a manufacturer-certified Atex side channel blower with direct coupling between motor and impeller. The Side Channel Blower is equipped with a safety valve that ensures continuous work, without any maintenance.



FILTER UNIT

Filtration is ensured by a Class M polyester cartridge filter (filtration efficiency 1 micron) with a high filtering surface area, which guarantees air passage even with a dirty filter.



JET CLEAN FILTER CLEANING SYSTEM

Equipped with JetClean® filter cleaning system. Due to the different pressure between the outside and inside of the vacuum cleaner, the system generates a flow of air through the cartridge that detaches dust from the surface of the filter, keeping the filter efficient while working and without stopping suction.



COLLECTION UNIT

The material is collected inside an AISI 304 stainless steel container, complete with a metal handle that allows its release, to avoid any sparks that could be generated by the electrostatic charge.

TECHNICAL DATA

MOTOR

Typologies	Atex side channel blower
Power	2,2 kW - 3 HP
Frequency	50/60 Hz
Voltage	400 V
Vacuum in continuous run	180 mBar
Maximum air flow	240 m3/h
Insulation class	65 IP
Noise level	72 dB(A)

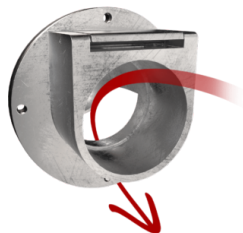
MACHINE

Atex marking	II 3 GD Ex htc IIIB T140°C Gc/Dc
EX category	3GD
Operating temperature	-10 / +40 C°
Suction inlet	50 Ø mm
Collection system	AISI304 stainless steel container
Capacity	20 Lt
Dimensions	516 x 545 mm
Height	1050 mm
Weight	57 Kg
Safety valve	Pressure relief valve

FILTRATION

Primary filter type	Cartridge
Filter surface	35000 cm2
EN 60335-2-69 filtration class	M
Media	Antistatic polyester
Filter Cleaning System	Jet Clean
JetClean Guillotine	Included

FEATURES



DEFLECTOR
Internal deflector to protect the filter



ATEX CERTIFICATION



PLUG
3-pin industrial plug



PRV
Pressure relief valve installed



GRD
Grounding



BX
Stainless steel bin AISI 304



JC
Jet Clean



ANT M
Antistatic filter (M class EN 60335-2-69)



WHEEL WITH BRAKE
Non-marking wheel with integrated brake



POWER SUPPLY CABLE



VACUUM GAUGE
Vacuum gauge for indication of filter clogged or in need of replacement

OPTIONS

AVAILABLE FILTER MEDIA



HEPA 14

Absolute filter (EN 1822)
28.000 cm² filter surface
H14 Class Filter (EN 1822)
Glass fiber

STRUCTURE AND OPTIONS

60^{Hz}

60HZ

Available in 60Hz version



3 YEARS WARRANTY

Purchasing the replacement filter along with the vacuum

ACCESSORIES



P13642

ANTISTATIC KIT PRO Ø 40MM

Kit containing antistatic accessories for application with 40 mm diameter ATEX vacuum cleaner



P13641

ANTISTATIC STARTER KIT Ø 40MM

Basic kit containing antistatic accessories for application with 40 mm diameter ATEX vacuum cleaner