

PNEUMATIC INDUSTRIAL VACUUM CLEANERS

# MINIAIR

## COMPRESSED AIR INDUSTRIAL VACUUM CLEANER



**APPLICATION**  
Powders, solids and  
shavings

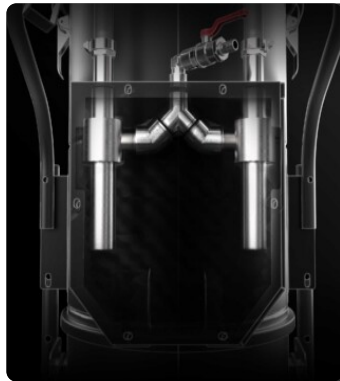


**CAPACITY**  
45 Lt

## FEATURES

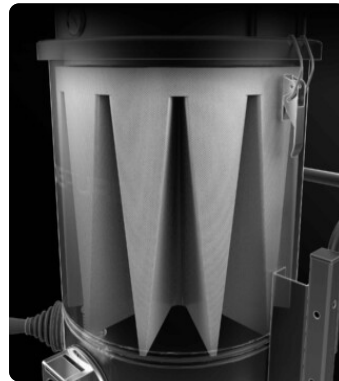
- Powered by compressed air
- High filtration capacity and efficiency
- Sturdy painted steel construction
- Multiple construction options available

## HIGHLIGHTS



### SUCTION UNIT

Suction is generated by two ejectors which generate, without the use of mechanical elements, a considerable vacuum inside the chamber, thus making suction possible.



### FILTER UNIT

Filtration is provided by a polyester star filter in class M (filtration efficiency 1 micron) with a high filtering surface area, which guarantees the passage of air even with a dirty filter.



### FILTER CLEANING SYSTEM

An ergonomic manual filter shaker allows the filter to be cleaned easily and quickly, removing dust and debris from the surface of the filter.



### COLLECTION UNIT

The material is collected inside a coated bin complete with a handle that allows it to be released. Thanks to the 4 sturdy pivoting wheels, the container can be moved with ease and the collected material can then be disposed of.

## TECHNICAL DATA

### MOTOR

Typologies	Venturi ejector
Vacuum in continuous run	500 mBar
Maximum air flow	300 m3/h
Noise level	78 dB(A)
Air required	2500 lt/min
Pressure requirement	6 - 8 Bar

### MACHINE

Suction inlet	70 Ø mm
Collection system	Steel container
Capacity	45 Lt
Dimensions	550 x 620 mm
Height	1150 mm
Weight	40 Kg

### FILTRATION

Primary filter type	Star
Filter surface	15000 cm2
EN 60335-2-69 filtration class	M
Media	Polyester
Filter Cleaning System	Manual

## FEATURES



**COMPRESSED AIR SUPPLY VALVE**



**VACUUM GAUGE**

Vacuum gauge for indication of filter clogged or in need of replacement



**PUSH HANDLE**



**WHEEL WITH BRAKE**

Non-marking wheel with integrated brake



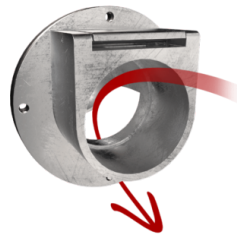
**WHEELS**

Non-marking pivoting wheels



**STEEL CONSTRUCTION**

Rugged industrial coated steel construction



**DEFLECTOR**

Internal deflector to protect the filter

**OPTIONS**
**AVAILABLE FILTER MEDIA**


**HEPA 14**  
 Absolute filter (EN 1822)  
 22.000 cm² filter surface  
 H14 Class Filter (EN 1822)  
 Glass fiber



**PTFE ANT**  
 Antistatic PTFE filter (M class EN 60335-2-69)



**ANT M**  
 Antistatic filter (M class EN 60335-2-69)



**PTFE**  
 PTFE Filter (M class EN 60335-2-69)



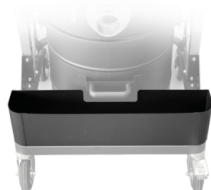
**MTF**  
 Teflon filter (M class EN 60335-2-69)



**NOMEX**  
 250° Celsius resistant filter

**STRUCTURE AND OPTIONS**


**3 YEARS WARRANTY**  
 Purchasing the replacement filter along with the vacuum



**AB**  
 Accessories basket



**BX**  
 Stainless steel bin AISI 304



**GX**  
 Stainless steel bin and chamber AISI 304



**GRD**  
 Grounding



**FLT**  
 Floater device

## ACCESSORIES



**P13638**  
**STARTER KIT Ø 40MM**  
 Basic kit containing specific accessories for 40 mm diameter solids and liquids vacuuming



**P12350**  
**STARTER KIT Ø 50MM**  
 Basic kit containing specific accessories for 50 mm diameter solids and liquids vacuuming



**P13639**  
**WET & DRY KIT Ø 40MM**  
 Kit containing specific accessories for 40 mm diameter solids and liquids vacuuming



**P11887**  
**WET & DRY KIT Ø 50MM**  
 Kit containing specific accessories for 50 mm diameter solids and liquids vacuuming



**P13640**  
**DRY KIT Ø 40MM**  
 Kit containing specific accessories for 40 mm diameter dust and solids vacuuming



**P12348**  
**DRY KIT Ø 50MM**  
 Kit containing specific accessories for 50 mm diameter dust and solids vacuuming



**P13970**  
**ARTICULATED SUCTION ARM Ø70**  
 Flexible PVC suction arm, retrofittable on existing models - 1.2 mt length - Ø70