

SUMP VACUUM CLEANERS FOR OIL AND CHIPS

# RAM OIL 280 MP

## INDUSTRIAL VACUUM FOR MAINTENANCE OF CNC MACHINERY



Watch the video!



**POWER**

3,9 kW - 5,2 HP



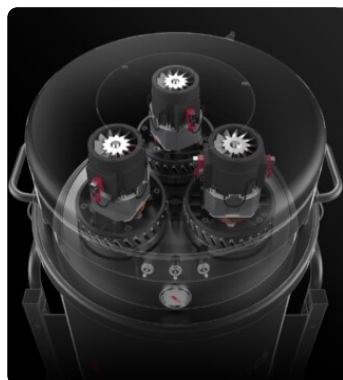
**APPLICATION**

Oils and lubricants mixed  
shavings

## FEATURES

- Filters and reuses lubricating and cutting oils
- Simplified liquid collection and swarf management
- Suction and discharge filtered liquid simultaneously
- Sturdy painted steel construction

## HIGHLIGHTS



### SUCTION UNIT

Suction is provided by 3 by-pass motors controlled by a single switch that allows them to start sequentially, avoiding current spikes. The motors are inside a sturdy enclosure, with an insulating sponge to maintain a low noise level.



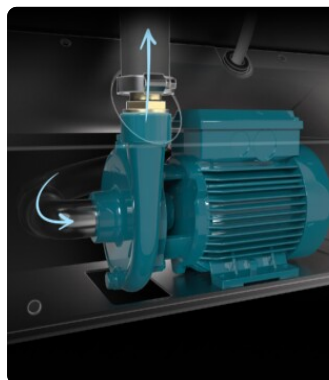
### FILTER UNIT

The collected liquid passes through a washable PPL filter with an efficiency of 150µ and a grid basket, which trap chips and simplify their disposal. In this way, even the smallest solid particles can be separated, making the filtered liquid suitable for reuse.



### 360° ROTATING INLET

360° rotating material inlet. Provides full freedom of movement without the need to move the vacuum cleaner.



### LIQUID DISCHARGE SYSTEM

An electric submerged pump is installed inside the container and allows the extracted and filtered liquids to be discharged quickly. Thanks to the non-return valve, it is possible to suction and discharge at the same time, without stopping the machine.

## TECHNICAL DATA

### MOTOR

Typologies	By-pass
Power	3,9 kW - 5,2 HP
Frequency	50/60 Hz
Voltage	230 V
Vacuum in continuous run	250 mBar
Maximum air flow	570 m3/h
Noise level	72 dB(A)

### MACHINE

Suction inlet	50 Ø mm
Collection system	Steel container
Solids capacity	40 lt
Liquids capacity	280 lt
Liquid discharge system	Discharge pump
Liquid discharge rate	80 Lt/min
Dimensions	700 x 1450 mm
Height	1320 mm
Weight	151 Kg
Solid separation	Basket grid
Forklift support	Included

### FILTRATION

Primary filter type	Bag
Media	Polypropylene 150µm

## FEATURES



**ACCESSORY HOLDER**



**P12352 OIL & SWARF KIT**

Basic kit containing specific accessories for 50 mm diameter oil and swarf vacuuming application



**OIL-PROOF CARTRIDGE**

Oil-proof cartridge for motor protection



**HOSE WITH DISCHARGE VALVE**



**PUSH HANDLE**



**POWER SUPPLY CABLE**



**PLUG**

4-pole industrial plug



**HOSE HOOK**



**VACUUM GAUGE**

Vacuum gauge for indication of filter clogged or in need of replacement



**WHEEL WITH BRAKE**

Non-marking wheel with integrated brake



**WHEELS**

Non-marking pivoting wheels



**STEEL CONSTRUCTION**

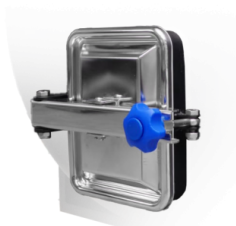
Rugged industrial coated steel construction

## OPTIONS

### STRUCTURE AND OPTIONS



**BX**  
Stainless steel bin AISI 304



**BIS**  
Inspection door for internal maintenance

## ACCESSORIES



**P12351**  
**OIL & SWARF KIT Ø 40MM.**  
Basic kit containing specific accessories for 40 mm diameter oil and swarf vacuuming application



**P12352**  
**OIL & SWARF KIT Ø 50MM.**  
Basic kit containing specific accessories for 50 mm diameter oil and swarf vacuuming application



**P12354**  
**OIL & SWARF KIT PRO Ø 40MM**  
Kit containing specific accessories for 40 mm diameter oil and swarf vacuuming application



**P12355**  
**OIL & SWARF KIT PRO Ø 50MM**  
Kit containing specific accessories for 50 mm diameter oil and swarf vacuuming application