

WELDING FUME EXTRACTORS

# XM TOOLS

## INDUSTRIAL SHOP VACUUM FOR MECHANICAL PROCESSING



**POWER**  
1,3 kW - 1,8 HP



**APPLICATION**  
Powders, solids and shavings



**CAPACITY**  
20 Lt

## FEATURES

- Compact and easy to handle
- Multi-stage filtration for maximum operator safety
- Sturdy painted steel construction
- Possibility of direct remote control from power tool

## HIGHLIGHTS



### SUCTION UNIT

Suction is provided by 1 by-pass motor placed inside a robust casing, with an insulating sponge to maintain a low noise level.



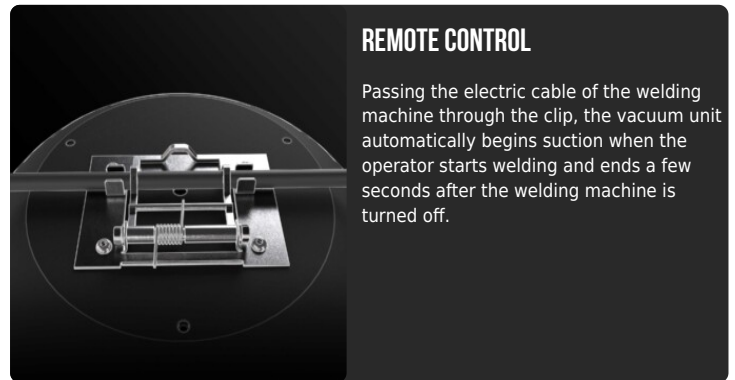
### FILTER UNIT

Filtration is ensured by a Class M polyester cartridge filter (filtration efficiency 1 micron) with a high filtering surface area, which guarantees air passage even with a dirty filter.



### JET CLEAN FILTER CLEANING SYSTEM

Equipped with JetClean® filter cleaning system. Due to the different pressure between the outside and inside of the vacuum cleaner, the system generates a flow of air through the cartridge that detaches dust from the surface of the filter, keeping the filter efficient while working and without stopping suction.



### REMOTE CONTROL

Passing the electric cable of the welding machine through the clip, the vacuum unit automatically begins suction when the operator starts welding and ends a few seconds after the welding machine is turned off.

## TECHNICAL DATA

### MOTOR

Typologies	By-pass
Power	1,3 kW - 1,8 HP
Frequency	50/60 Hz
Voltage	230 V
Vacuum in continuous run	250 mBar
Maximum air flow	190 m3/h
Noise level	72 dB(A)
Remote control	Power tool socket

### MACHINE

Suction inlet	50 Ø mm
Collection system	Steel container
Capacity	20 Lt
Dimensions	534 x 471 mm
Height	983 mm
Weight	36 Kg

### FILTRATION

Primary filter type	Cartridge
Filter surface	16000 cm2
EN 60335-2-69 filtration class	M
Media	PTFE coated polyester
Filter Cleaning System	Jet Clean
JetClean Guillotine	Included

OPTIONS

AVAILABLE FILTER MEDIA



**HEPA 13**  
Absolute filter (EN 1822)  
35.000 cm<sup>2</sup> filter surface  
H13 Class Filter (EN 1822)  
Glass fiber



**HEPA 14**  
Absolute filter (EN 1822)  
22.000 cm<sup>2</sup> filter surface  
H14 Class Filter (EN 1822)  
Glass fiber

STRUCTURE AND OPTIONS



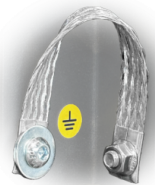
**60HZ**  
Available in 60Hz version



**3 YEARS WARRANTY**  
Purchasing the replacement filter along with the vacuum



**BX**  
Stainless steel bin AISI 304

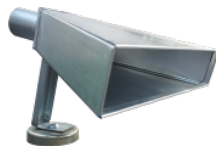


**GRD**  
Grounding

ACCESSORIES



**P13638**  
**STARTER KIT Ø 40MM**  
Basic kit containing specific accessories for 40 mm diameter solids and liquids vacuuming



**P12000**  
**SUCTION HOOD (400X50MM)**  
Galvanised steel suction hood for welding fumes or suspended dusts. Connection for 50mm diameter pipe with bracket and magnet for positionin ...