

ATEX AND ACD VACUUM CLEANERS

# M 45 H ACD

## INDUSTRIAL VACUUM CLEANER FOR COMBUSTIBLE DUSTS



Watch the video!



**POWER**  
2,6 - 3,5



**APPLICATION**  
Combustible dusts



**CAPACITY**  
45Lt

## FEATURES

- Classified ACD for suction of combustible dust in areas not classified Atex
- 2 levels of progressive filtration
- Compact and easy to maintain
- Vacuum gauge to monitor performance

## HIGHLIGHTS



### SUCTION UNIT

Suction is provided by 2 by-pass motors controlled by independent switches, allowing the operator to control suction performance. The motors are located inside a robust enclosure, with an insulating sponge to maintain a low noise level.



### FILTER UNIT

Filtration is provided by two progressive efficiency filters installed in series: a primary star polyester filter class M (filtering efficiency 1 micron) with high filtering surface area and an absolute secondary filter in class H14.



### DESIGNED FOR COMBUSTIBLE DUST

The vacuum unit is a powerful Brushless motor, suitable for continuous work. Two filters are installed on the vacuum cleaner head: one to protect the motor and the other placed on the air outlet. The air that escapes is totally carbon-free.



### COLLECTION UNIT

The material is collected inside an AISI 304 stainless steel container, complete with a metal handle that allows its release, to avoid any sparks that could be generated by the electrostatic charge.

## TECHNICAL DATA

### MOTOR

Typologies	By-pass
Power	2,6 - 3,5
Frequency	50 Hz
Voltage	230 V
Vacuum in continuous run	250 mBar
Maximum air flow	380 m3/h
Insulation class	54   F IP
Noise level	72 dB(A)

### MACHINE

Suction inlet	50 Ø mm
Collection system	AISI304 stainless steel container
Capacity	45 Lt
Dimensions	550 X 620 mm
Height	1400 mm
Weight	45 Kg

### FILTRATION

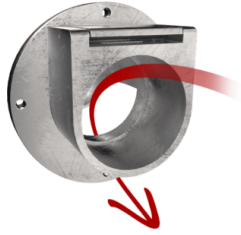
Primary filter type	Star
Filter surface	15000 cm2
EN 60335-2-69 filtration class	M
Media	Antistatic polyester
Filter Cleaning System	Manual
Secondary Absolute Filter	H14 - Included

## FEATURES



### **FILTER CLOGGING INDICATOR**

Filter clogged or need to be replaced  
indicator light



### **DEFLECTOR**

Internal deflector to protect the filter



### **PUSH HANDLE**



### **SHUKO TYPE PLUG**



### **POWER SUPPLY CABLE**



### **WHEEL WITH BRAKE**

Non-marking wheel with integrated brake



### **WHEELS**

Non-marking pivoting wheels



### **STEEL CONSTRUCTION**

Rugged industrial coated steel construction



### **GRD**

Grounding



### **BX**

Stainless steel bin AISI 304



### **HEPA 14**

Absolute filter (EN 1822)

## OPTIONS

### AVAILABLE FILTER MEDIA



#### PTFE ANT

Antistatic PTFE filter (M class EN 60335-2-69)

### STRUCTURE AND OPTIONS

**60<sup>Hz</sup>** 

#### 60HZ

Available in 60Hz version



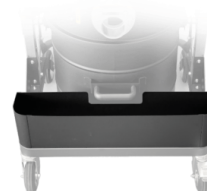
#### 3 YEARS WARRANTY

Purchasing the replacement filter along with the vacuum



#### GX

Stainless steel bin and chamber AISI 304



#### AB

Accessories basket



#### RC SCHUKO

Remote control by power tool (MAX 2000 W)

## ACCESSORIES



### P12377

#### ANTISTATIC KIT PRO Ø 50MM

Kit containing antistatic accessories for application with 50 mm diameter ATEX vacuum cleaner



### P13642

#### ANTISTATIC KIT PRO Ø 40MM

Kit containing antistatic accessories for application with 40 mm diameter ATEX vacuum cleaner



### P12378

#### ANTISTATIC STARTER KIT Ø 50MM

Basic kit containing antistatic accessories for application with 50 mm diameter ATEX vacuum cleaner



### P13641

#### ANTISTATIC STARTER KIT Ø 40MM

Basic kit containing antistatic accessories for application with 40 mm diameter ATEX vacuum cleaner