

ATEX AND ACD VACUUM CLEANERS

M100 H ACD

INDUSTRIAL VACUUM FOR COMBUSTIBLE POWDERS



POWER
3,9 kW - 5,2 HP



APPLICATION
Combustible dusts

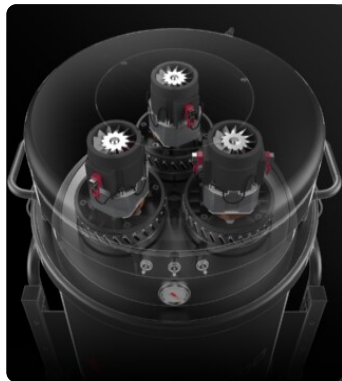


CAPACITY
100Lt

FEATURES

- Classified ACD for suction of combustible powders in areas not classified Atex
- 2 levels of progressive filtration
- Compact and easy to maintain
- Vacuum gauge to monitor performance

HIGHLIGHTS



SUCTION UNIT

Suction is provided by 3 by-pass motors operated by independent switches, allowing the operator to control suction performance. The motors are located inside a robust enclosure, with an insulating sponge to maintain a low noise level.



FILTER UNIT

Filtration is provided by two progressive efficiency filters installed in series: a primary star polyester filter class M (filtering efficiency 1 micron) with high filtering surface area and an absolute secondary filter in class H14.



DESIGNED FOR COMBUSTIBLE DUST

The vacuum unit is a powerful Brushless motor, suitable for continuous work. Two filters are installed on the vacuum cleaner head: one to protect the motor and the other placed on the air outlet. The air that escapes is totally carbon-free.



COLLECTION UNIT

The material is collected inside an AISI 304 stainless steel container, complete with a metal handle that allows its release, to avoid any sparks that could be generated by the electrostatic charge.

TECHNICAL DATA

MOTOR

| | |
|--------------------------|-----------------|
| Typologies | By-pass |
| Power | 3,9 kW - 5,2 HP |
| Frequency | 50/60 Hz |
| Voltage | 230 V |
| Vacuum in continuous run | 250 mBar |
| Maximum air flow | 570 m3/h |
| Insulation class | 54 F IP |
| Noise level | 72 dB(A) |

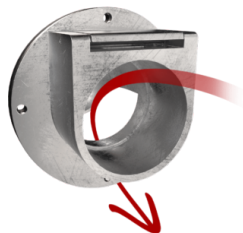
MACHINE

| | |
|-------------------|-----------------------------------|
| Suction inlet | 70 Ø mm |
| Collection system | AISI304 stainless steel container |
| Capacity | 100 Lt |
| Dimensions | 660 x 800 mm |
| Height | 1515 mm |
| Weight | 80 Kg |

FILTRATION

| | |
|--------------------------------|----------------------|
| Primary filter type | Star |
| Filter surface | 24000 cm2 |
| EN 60335-2-69 filtration class | M |
| Media | Antistatic polyester |
| Filter Cleaning System | Manual |
| Secondary Absolute Filter | H14 - Included |

FEATURES



DEFLECTOR
Internal deflector to protect the filter



PUSH HANDLE



SHUKO TYPE PLUG



VACUUM GAUGE
Vacuum gauge for indication of filter clogged or in need of replacement



POWER SUPPLY CABLE



WHEEL WITH BRAKE
Non-marking wheel with integrated brake



WHEELS
Non-marking pivoting wheels



STEEL CONSTRUCTION
Rugged industrial coated steel construction



GRD
Grounding



BX
Stainless steel bin AISI 304



HEPA 14
Absolute filter (EN 1822)



ANT M
Antistatic filter (M class EN 60335-2-69)

OPTIONS

AVAILABLE FILTER MEDIA



PTFE ANT

Antistatic PTFE filter (M class EN 60335-2-69)

STRUCTURE AND OPTIONS

60^{Hz} 

60HZ

Available in 60Hz version



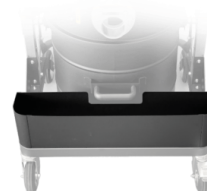
3 YEARS WARRANTY

Purchasing the replacement filter along with the vacuum



GX

Stainless steel bin and chamber AISI 304



AB

Accessories basket



RC SCHUKO

Remote control by power tool (MAX 2000 W)

ACCESSORIES



P10866
IRON REDUCER Ø 70/50MM
 Reducer for vacuum quick fitting in galvanised steel 70/50 mm diameter



P10867
IRON REDUCER Ø 70/40MM
 Reducer for vacuum quick fitting in galvanised steel 70/40 mm diameter



P12355
OIL & SWARF KIT PRO Ø 50MM
 Kit containing specific accessories for 50 mm diameter oil and swarf vacuuming application



P13642
ANTISTATIC KIT PRO Ø 40MM
 Kit containing antistatic accessories for application with 40 mm diameter ATEX vacuum cleaner



P12378
ANTISTATIC STARTER KIT Ø 50MM
 Basic kit containing antistatic accessories for application with 50 mm diameter ATEX vacuum cleaner



P13641
ANTISTATIC STARTER KIT Ø 40MM
 Basic kit containing antistatic accessories for application with 40 mm diameter ATEX vacuum cleaner