

ATEX AND ACD VACUUM CLEANERS

M65 H ACD

INDUSTRIAL VACUUM FOR COMBUSTIBLE POWDERS



POWER
3,9 kW - 5,2 HP



APPLICATION
Combustible dusts

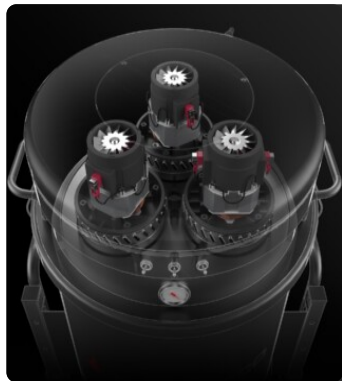


CAPACITY
65Lt

FEATURES

- Classified ACD for suction of combustible powders in areas not classified Atex
- 2 levels of progressive filtration
- Compact and easy to maintain
- Vacuum gauge to monitor performance

HIGHLIGHTS



SUCTION UNIT

Suction is provided by 3 by-pass motors operated by independent switches, allowing the operator to control suction performance. The motors are located inside a robust enclosure, with an insulating sponge to maintain a low noise level.



FILTER UNIT

Filtration is provided by two progressive efficiency filters installed in series: a primary star polyester filter class M (filtering efficiency 1 micron) with high filtering surface area and an absolute secondary filter in class H14.



DESIGNED FOR COMBUSTIBLE DUST

Ideal for collecting fine and potentially combustible dust in non-ATEX classified areas. The ACD vacuum is equipped with antistatic filters and full grounding to ensure safe and reliable operation.



COLLECTION UNIT

The material is collected inside an AISI 304 stainless steel container, complete with a metal handle that allows its release, to avoid any sparks that could be generated by the electrostatic charge.

TECHNICAL DATA

MOTOR

Typologies	By-pass
Power	3,9 kW - 5,2 HP
Frequency	50/60 Hz
Voltage	230 V
Vacuum in continuous run	250 mBar
Maximum air flow	570 m3/h
Insulation class	54 F IP
Noise level	72 dB(A)

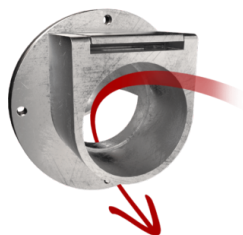
MACHINE

Suction inlet	70 Ø mm
Collection system	AISI304 stainless steel container
Capacity	65 Lt
Dimensions	660 x 800 mm
Height	1300 mm
Weight	80 Kg

FILTRATION

Primary filter type	Star
Filter surface	24000 cm2
EN 60335-2-69 filtration class	M
Media	Antistatic polyester
Filter Cleaning System	Manual
Secondary Absolute Filter	H14 - Included

FEATURES



DEFLECTOR
Internal deflector to protect the filter



PUSH HANDLE



SHUKO TYPE PLUG



VACUUM GAUGE
Vacuum gauge for indication of filter clogged or in need of replacement



POWER SUPPLY CABLE



WHEEL WITH BRAKE
Non-marking wheel with integrated brake



WHEELS
Non-marking pivoting wheels



STEEL CONSTRUCTION
Rugged industrial coated steel construction



GRD
Grounding



BX
Stainless steel bin AISI 304



HEPA 14
Absolute filter (EN 1822)



ANT M
Antistatic filter (M class EN 60335-2-69)

OPTIONS

AVAILABLE FILTER MEDIA



PTFE ANT

Antistatic PTFE filter (M class EN 60335-2-69)

STRUCTURE AND OPTIONS

60^{Hz}

60HZ

Available in 60Hz version



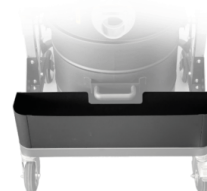
3 YEARS WARRANTY

Purchasing the replacement filter along with the vacuum



GX

Stainless steel bin and chamber AISI 304



AB

Accessories basket



RC SCHUKO

Remote control by power tool (MAX 2000 W)

ACCESSORIES



P10866
IRON REDUCER Ø 70/50MM
 Reducer for vacuum quick fitting in galvanised steel 70/50 mm diameter



P10867
IRON REDUCER Ø 70/40MM
 Reducer for vacuum quick fitting in galvanised steel 70/40 mm diameter



P12355
OIL & SWARF KIT PRO Ø 50MM
 Kit containing specific accessories for 50 mm diameter oil and swarf vacuuming application



P13642
ANTISTATIC KIT PRO Ø 40MM
 Kit containing antistatic accessories for application with 40 mm diameter ATEX vacuum cleaner



P12378
ANTISTATIC STARTER KIT Ø 50MM
 Basic kit containing antistatic accessories for application with 50 mm diameter ATEX vacuum cleaner



P13641
ANTISTATIC STARTER KIT Ø 40MM
 Basic kit containing antistatic accessories for application with 40 mm diameter ATEX vacuum cleaner