

ATEX AND ACD VACUUM CLEANERS

BL AM 3D Z22

INDUSTRIAL VACUUM FOR METALLIC DUST



Watch the video!



POWER
1,1 kW - 1,5 HP



APPLICATION
Combustible dusts

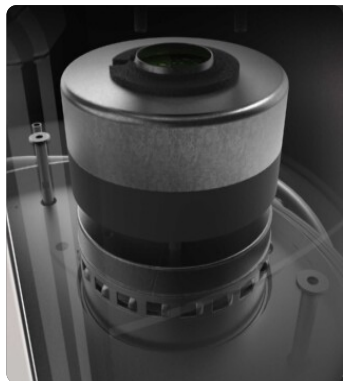


COLLECTION SYSTEM
Container with inertizing bath

FEATURES

- Atex certified for use in Atex zone 22
- Container with inerting liquid bath that prevents the formation of explosive atmospheres inside the vacuum cleaner
- Ideal for safe suction of conductive metal dusts
- Safety valve included

HIGHLIGHTS



SUCTION UNIT

The vacuum unit is a powerful Brushless motor, suitable for continuous work. Two filters are installed on the vacuum cleaner head: one to protect the motor and the other placed on the air outlet. The air that comes out is totally filtered



FILTER UNIT

Filtration is ensured by a Class M polyester cartridge filter (filtration efficiency 1 micron) with a high filtering surface area, which guarantees air passage even with a dirty filter.



INERTING LIQUID BATH

Container with conductive dust immersion system. Prevents the formation of explosive atmospheres inside the vacuum cleaner by neutralizing incoming dust.



SAFETY VALVE

Safety valve that in case of reactions between powders and liquids inside the container lets out the released gases preventing explosions.

TECHNICAL DATA

MOTOR

Typologies	Brushless
Power	1,1 kW - 1,5 HP
Frequency	50/60 Hz
Voltage	230 V
Vacuum in continuous run	230 mBar
Maximum air flow	220 m3/h
Insulation class	55 F IP
Noise level	72 dB(A)

MACHINE

Atex marking	II 3D Ex htc IIIC T140°C Dc
EX category	3D
Operating temperature	-10/+40 C°
Suction inlet	50 Ø mm
Collection system	Container with inerting liquid
Capacity	45 Lt
Liquid discharge system	Discharge valve
Dimensions	550 X 620 mm
Height	1400 mm
Weight	50 Kg
Solid separation	Basket grid
Liquid separation	PPL bag 150?m
Safety valve	2x Hydrogen Vent

FILTRATION

Primary filter type	Cartridge
Filter surface	35000 cm2
EN 60335-2-69 filtration class	H13
Media	Antistatic polyester
Inlet air filter	Included

FEATURES



ATEX CERTIFICATION



HYDROGEN VENT

Safety valve to let out any gases formed inside the aspirator



PUSH HANDLE



PLUG

3-pin industrial plug



POWER SUPPLY CABLE



WHEEL WITH BRAKE

Non-marking wheel with integrated brake



WHEELS

Non-marking pivoting wheels



STEEL CONSTRUCTION

Rugged industrial coated steel construction



BX

Stainless steel bin AISI 304



ANTISTATIC FILTRATION

Antistatic filtration to discharge static energy



VACUUM GAUGE

Vacuum gauge for indication of filter clogged or in need of replacement



GRD

Grounding



HEPA 13

Absolute filter (EN 1822)

OPTIONS

STRUCTURE AND OPTIONS

60^{Hz}

60HZ
Available in 60Hz version



3 YEARS WARRANTY
Purchasing the replacement filter along with the vacuum

ACCESSORIES



P12377
ANTISTATIC KIT PRO Ø 50MM
Kit containing antistatic accessories for application with 50 mm diameter ATEX vacuum cleaner



P12378
ANTISTATIC STARTER KIT Ø 50MM
Basic kit containing antistatic accessories for application with 50 mm diameter ATEX vacuum cleaner