

ATEX AND ACD VACUUM CLEANERS

PUMA FIX 20 3D Z22

FIXED INDUSTRIAL ATEX VACUUM CLEANER FOR SUCTION SYSTEMS



POWER
15 kW - 20 HP



APPLICATION
Powders, solids and
shavings

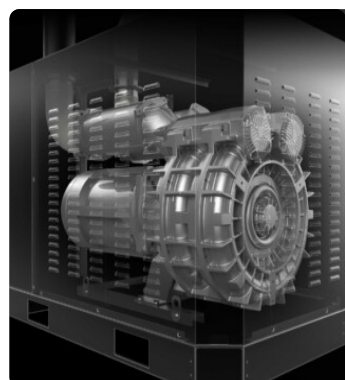


CAPACITY
175Lt

FEATURES

- Powerful Atex-certified side-channel blowers suitable for continuous operation
- Easy to move with a forklift truck
- Ideal for installation in centralized systems
- Integrated cyclonic system to extend the useful life of the vacuum cleaner

HIGHLIGHTS



SUCTION UNIT

The suction unit is a manufacturer-certified Atex side channel blower with direct coupling between motor and impeller. The Side Channel Blower is equipped with a safety valve that ensures continuous work, without any maintenance.



FILTER UNIT

The tangential inlet facilitates the deposition of the sucked material in the container due to the cyclonic effect. Filtration is ensured by a polyester cartridge filter in class M (filtration efficiency 1 micron) with a high filtering surface area, which guarantees the passage of air even with a dirty filter.



SP FILTER CLEANING SYSTEM

Automatic filter cleaning system in reverse flow of air at 6 bar (compressed air not supplied as standard). Each filter is cleaned at regular, alternately adjustable intervals without interrupting suction. Ideal for fine and difficult dust.



COLLECTION UNIT

The material is collected inside an AISI 304 stainless steel container, complete with a metal handle that allows its release, to avoid any sparks that could be generated by the electrostatic charge.

TECHNICAL DATA

MOTOR

| | |
|--------------------------|--------------------------|
| Typologies | Atex side channel blower |
| Power | 15 kW - 20 HP |
| Frequency | 50/60 Hz |
| Voltage | 400 V |
| Vacuum in continuous run | 350 mBar |
| Maximum air flow | 950 m3/h |
| Insulation class | 55 F IP |
| Noise level | 74 dB(A) |
| Remote control | Free connector available |
| Electrical panel | Included |

MACHINE

| | |
|-----------------------|-----------------------------|
| Atex marking | II 3D Ex htc IIIB T140°C Dc |
| EX category | 3D |
| Operating temperature | -10/+40 C° |
| Suction inlet | 100 Ø mm |
| Collection system | Steel container |
| Capacity | 175 Lt |
| Dimensions | 840 x 1700 mm |
| Height | 1970 mm |
| Safety valve | Pressure relief valve |
| Forklift support | Included |

FILTRATION

| | |
|--------------------------------|----------------------|
| Primary filter type | 4x Cartridges |
| Filter surface | 120000 cm2 |
| EN 60335-2-69 filtration class | M |
| Media | Antistatic polyester |
| Filter Cleaning System | Automatic SP |

FEATURES



ELECTRICAL PANEL

Electrical panel, implementable with additional functions



ATEX CERTIFICATION



ANTISTATIC FILTRATION

Antistatic filtration to discharge static energy



4-PIN ATEX INDUSTRIAL PLUG



VACUUM GAUGE

Vacuum gauge for indication of filter clogged or in need of replacement



POWER SUPPLY CABLE



STEEL CONSTRUCTION

Rugged industrial coated steel construction



CYCLONIC EFFECT

Tangential inlet and cyclone installed



PRV

Pressure relief valve installed



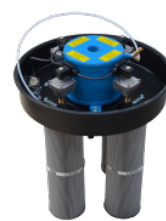
GRD

Grounding



BX

Stainless steel bin AISI 304



SP

Automatic reverse jet cleaning system

OPTIONS

AVAILABLE FILTER MEDIA



HEPA 14

Absolute filter (EN 1822)
110.000 cm² filter surface
H14 Class Filter (EN 1822)
Glass fiber

STRUCTURE AND OPTIONS

60^{Hz}

60HZ

Available in 60Hz version



3 YEARS WARRANTY

Purchasing the replacement filter along with the vacuum



FLAMELESS VENT

A valve that contains the flame and the overpressure generated by a possible explosion.



PANEL VENT FOR DIRECTIONAL EXPLOSION

An explosion vent designed to break at a specific pressure and release the explosive pressure in a safe area.
Panel vent for explosion



GX

Stainless steel bin and chamber AISI 304