

CENTRAL VACUUM SYSTEMS

# HF 300

## THREE-PHASE INDUSTRIAL VACUUM CLEANER WITH FIXED STRUCTURE



Watch the video!



**POWER**  
3 kW - 4 HP



**APPLICATION**  
Powders, solids and  
shavings

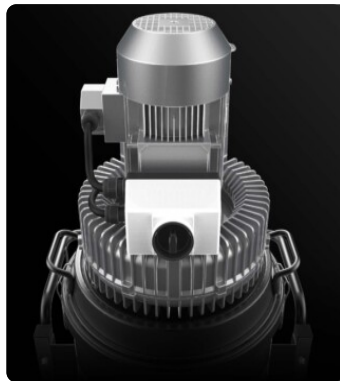


**COLLECTION SYSTEM**  
Localized discharge

## FEATURES

- Powerful side channel blower
- Ideal for machine-applied solutions
- Convenient manual filter shaker
- Multiple construction and material discharge options available

## HIGHLIGHTS



### SUCTION UNIT

The suction unit is a side channel blower with direct coupling between motor and impeller. The turbine is equipped with a safety valve to ensure continuous, maintenance-free operation. A metal silencer is included as standard in the turbine to ensure a low noise level.



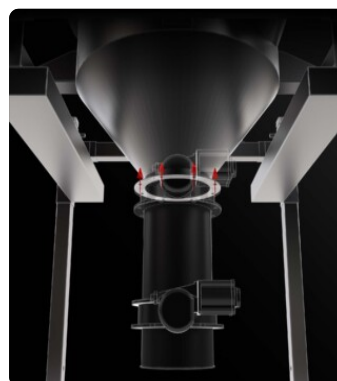
### FILTER UNIT

The tangential inlet facilitates the cyclonic effect to deposit the collected material in the container. Filtration is ensured by a polyester star filter in class M (filtering efficiency 1 micron) with high filtering surface area, which guarantees air passage even with a dirty filter.



### FILTER CLEANING SYSTEM

An ergonomic manual filter shaker allows the filter to be cleaned easily and quickly, removing dust and debris from the surface of the filter.



### CUSTOM EXHAUST SYSTEM

A specific discharge system, intermittent or continuous, can be installed depending on operational needs.

## TECHNICAL DATA

### MOTOR

Typologies	Side channel blower
Power	3 kW - 4 HP
Frequency	50/60 Hz
Voltage	400 V
Vacuum in continuous run	270 mBar
Maximum air flow	350 m3/h
Noise level	74 dB(A)

### MACHINE

Suction inlet	80 Ø mm
Collection system	Conveyed discharge
Discharge diameter	150 Ø mm
Dimensions	1370 x 680 mm
Height	1952 mm
Weight	150 Kg
Safety valve	Pressure relief valve

### FILTRATION

Primary filter type	Star
Filter surface	24000 cm2
EN 60335-2-69 filtration class	M
Media	Polyester
Filter Cleaning System	Manual

## FEATURES



### ELECTRICAL PANEL

Electrical panel, implementable with additional functions



### PLUG

4-pole industrial plug



### VACUUM GAUGE

Vacuum gauge for indication of filter clogged or in need of replacement



### POWER SUPPLY CABLE



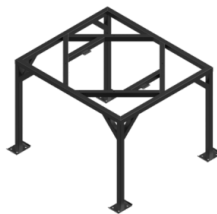
### STEEL CONSTRUCTION

Rugged industrial coated steel construction



### CYCLONIC EFFECT

Tangential inlet and cyclone installed



### STR

Four legs to discharge in big bag



### PRV

Pressure relief valve installed

**OPTIONS**
**AVAILABLE FILTER MEDIA**

**HEPA 14**

Absolute filter (EN 1822)  
 22.000 cm² filter surface  
 H14 Class Filter (EN 1822)  
 Glass fiber


**PTFE ANT**

Antistatic PTFE filter (M class EN 60335-2-69)


**ANT M**

Antistatic filter (M class EN 60335-2-69)


**NOMEX**

250° Celsius resistant filter


**MTF**

Teflon filter (M class EN 60335-2-69)


**PTFE**

PTFE Filter (M class EN 60335-2-69)

**AVAILABLE FILTER CLEANING SYSTEMS**

**SP**

Automatic reverse jet cleaning system  
 Antistatic M class filter (EN 60335-2-69), 3  
 Polyester filter cartridges, 9 m² filter surface


**PSC**

Semiautomatic pneumatic filter shaker

## STRUCTURE AND OPTIONS

**60<sup>Hz</sup>**

**60HZ**

Available in 60Hz version



**3 YEARS WARRANTY**

Purchasing the replacement filter along with the vacuum



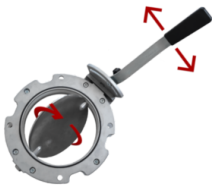
**RC**

Remote control 24V ON/OFF



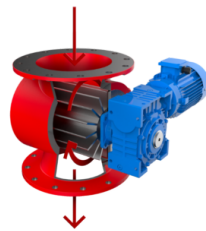
**DISCHARGE WITH COUNTERBALANCED FLAP**

The material is automatically discharged every time suction is stopped.



**DISCHARGE WITH BUTTERFLY VALVE**

Manual intermittent discharging system with butterfly valve  
Manual discharging butterfly valve



**ROTARY VALVE FOR CONTINUOUS DISCHARGE**

The valve rotates continuously allowing a constant and uniform discharge of the aspirated material.  
Rotary valve for continuous hopper discharge



**ROTARY LEVEL SENSOR**

Sensor with rotating paddle that sends a signal when the container is full to immediately stop suction

## ACCESSORIES



**P13638**

**STARTER KIT Ø 40MM**

Basic kit containing specific accessories for 40 mm diameter solids and liquids vacuuming



**P12350**

**STARTER KIT Ø 50MM**

Basic kit containing specific accessories for 50 mm diameter solids and liquids vacuuming



**P13640**

**DRY KIT Ø 40MM**

Kit containing specific accessories for 40 mm diameter dust and solids vacuuming



**P12348**

**DRY KIT Ø 50MM**

Kit containing specific accessories for 50 mm diameter dust and solids vacuuming