

ATEX AND ACD VACUUM CLEANERS

ECOBULL PLUS DEX 1/2D

ATEX INDUSTRIAL VACUUM FOR HEAVY DUTY USE



POWER
4 kW - 5,5 HP



APPLICATION
Combustible dusts



CAPACITY
65 Lt

FEATURES

- Certified for intensive work in Atex zones 21 or 22
- High filtration efficiency, with complete grounding of the unit
- Category 1D certified internal protection for maximum safety
- Powerful side channel blower certified Atex in category 2D

HIGHLIGHTS



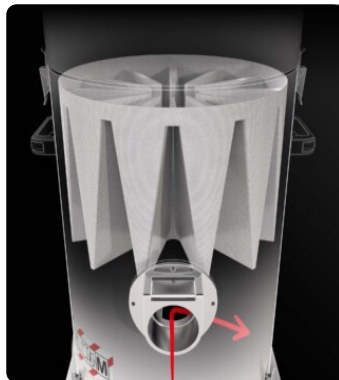
SUCTION UNIT

The suction unit is a manufacturer-certified Atex side channel blower with direct coupling between motor and impeller. The Side Channel Blower is equipped with a safety valve that ensures continuous work, without any maintenance.



INTERNAL CERTIFICATION CAT 1D - ZONE 20

Thanks to its 1D - Zone 20 certified chamber, the vacuum cleaner guarantees maximum safety and compliance when vacuuming combustible or conductive dusts (Group IIIC), even when these are contained within the unit.



FILTER UNIT

The material is diverted by a deflector protecting the main filter. Filtration is ensured by a class M polyester star filter (filtration efficiency 1 micron) with high filtering surface area, which guarantees air passage even with the dirty filter.



COLLECTION UNIT

The material is collected inside an AISI 304 stainless steel container, complete with a metal handle that allows its release, to avoid any sparks that could be generated by the electrostatic charge.

TECHNICAL DATA

MOTOR

Typologies	Atex 2D side channel blower
Power	4 kW - 5,5 HP
Frequency	50/60 Hz
Voltage	400 V
Vacuum in continuous run	270 mBar
Maximum air flow	350 m3/h
Insulation class	55 F IP
Noise level	72 dB(A)

MACHINE

Atex marking	II 1/2D Ex h IIIC T160 Da/Db
EX category	1/2D
Operating temperature	-20/+40 C°
Suction inlet	70 Ø mm
Collection system	AISI304 stainless steel container
Capacity	65 Lt
Dimensions	660 x 800 mm
Height	1630 mm
Weight	95 Kg
Safety valve	Pressure relief valve

FILTRATION

Primary filter type	Star
Filter surface	24000 cm2
EN 60335-2-69 filtration class	M
Media	Antistatic polyester
Filter Cleaning System	Manual

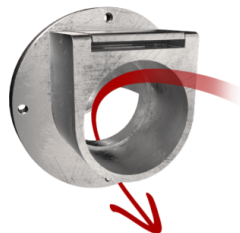
FEATURES



THIRD PARTY ATEX CERTIFICATION



DRY TYPE VACUUM CLEANER
Atex-certified vacuum cleaner with dry dust filtration, as per EN17348



DEFLECTOR
Internal deflector to protect the filter



4-PIN ATEX INDUSTRIAL PLUG



PRV
Pressure relief valve installed



GRD
Grounding



BX
Stainless steel bin AISI 304



ANT M
Antistatic filter (M class EN 60335-2-69)



WHEEL WITH BRAKE
Non-marking wheel with integrated brake



POWER SUPPLY CABLE



VACUUM GAUGE
Vacuum gauge for indication of filter clogged or in need of replacement

OPTIONS

AVAILABLE FILTER MEDIA



HEPA 14

Absolute filter (EN 1822)
22.000 cm² filter surface
H14 Class Filter (EN 1822)
Glass fiber

STRUCTURE AND OPTIONS

60^{Hz}

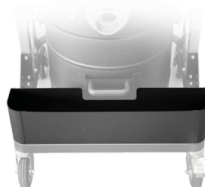
60HZ

Available in 60Hz version



3 YEARS WARRANTY

Purchasing the replacement filter along with the vacuum



AB

Accessories basket



GX

Stainless steel bin and chamber AISI 304

ACCESSORIES



P13642

ANTISTATIC KIT PRO Ø 40MM

Kit containing antistatic accessories for application with 40 mm diameter ATEX vacuum cleaner



P13641

ANTISTATIC STARTER KIT Ø 40MM

Basic kit containing antistatic accessories for application with 40 mm diameter ATEX vacuum cleaner



P14901/EX

VERTIDEX – ATEX-CERTIFIED ACCESSORY KIT FOR CLEANING AT HEIGHT Ø 40MM