

DUST COLLECTORS

WHY USE A DUST COLLECTOR?



POINT OF SOURCE EXTRACTION

Industrial vacuuming is a key element in ensuring cleanliness and efficiency in working environments. Volatile and airborne dust are indeed a common problem in industry, especially in sectors such as woodworking, cement and ceramic production and the food industry. Managing these waste materials is critical to ensuring a safe and clean work environment, and to maintaining high standards of efficiency and productivity.



FAST AND EFFICIENT CLEANING

of the workspace and its surroundings



SAFETY

for the workers and the work environment



PRODUCTIVITY

reduction of accidents and downtimes

SAFETY FOR WORKERS AND WORK ENVIRONMENT



STURDY METAL CONSTRUCTION

Increased durability and suitability for heavy-duty tasks.



HIGH PERFORMANCES

Extensive selection of suction units to fit every specific application.



HIGH CUSTOMIZATION

Wide manufacturing optionals to satisfy specific requirements.

Breathe safely with the right vacuum for fine or hazardous dust. Using a dust collector protect workers and the environment from fine or hazardous dust exposure. Depureco vacuums come standard with M-class filters for everyday protection. For the toughest jobs and the highest level of safety, you can upgrade to H-class filters. H-class filters capture even finer particles, ensuring maximum protection.

HOW TO CHOOSE?

AIRFLOW

	DF 075	DF 22	DF 40
INLET DIAMETER (mm)	70 100 120	100 120 150	150 180 200
AIR FLOW (m³h)	300 600 800	800 1000 1400	1500 2100 2700

SUCTION UNIT

The unit is equipped with a powerful electric fan capable of producing a huge airflow able to collect all kinds of airborne dust and particles, keeping a safe work environment.



FILTER CLEANING SYSTEM

FILTER SHAKER MANUAL

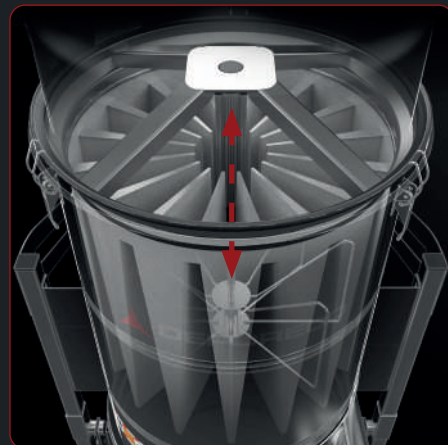
The vacuum cleaner is equipped with a lever connected directly to the filter. The vertical movement of the lever compresses the filter, causing the material to detach from the surface of the filter and fall into the container.



PSC - AUTOMATIC

The vacuum cleaner is equipped with a pneumatic piston connected directly to the filter. The vertical movement of the piston compresses the filter, causing the material to detach from the surface of the filter and fall into the container.

It requires compressed air to operate.



SP - AUTOMATIC

Each filter cartridge is cleaned at adjustable intervals by a high-pressure (6 Bar) air jet, which shakes the cartridge, dislodging large amounts of material from the filter, making it completely clean in a matter of seconds.

It requires compressed air to operate.



APPLICATION



ARTICULATED ARM

Articulated arm, able to be bent in any position you need to extract non combustible light dust that becomes airborne keeping the work environment safe. The arm comes with a flow regulator to adjust the suction power.



ATEX ARTICULATED ARM

Articulated arm, made of stainless steel, able to be bent in any position you need to extract combustible dust to avoid any combustion and avoid potential danger, keeping your work environment safe. The arm comes with a flow regulator to adjust the suction power.



DIRECT EXTRACTION

A flexible hose connects the dust collector directly to the source to vacuum the dust directly from the machines.



CUSTOM FIXED INSTALLATIONS

Depureco engineers and manufactures centralized vacuum systems equipped with powerful electric fans that deliver massive airflow, capable of collecting large amounts of dust to create a healthier and safer work environment. These systems feature large surface area filters and can be customized with various discharge systems to meet specific needs.

FILTRATION OPTIONS



M CLASS

Polyester filter for dust category M.
Filtration efficiency down to 1μ.



ANTISTATIC M

Antistatic polyester filter with increased surface area for dust category M.
Filtration efficiency down to 1μ.



NOMEX

High temperature resistant filter ideal for hot dust extraction.



ACTIVE CARBONS

Activated carbon filter to retain odours.



PTFE

Teflon-blended polyester filter, particularly suitable for vacuuming up fine dust and sticky materials.



M CLASS CARTRIDGE

Polyester antistatic cartridge for dust category M.
Filtration efficiency down to 1μ.



HEPA 13

Absolute cartridge filter for very fine dust with high filtration efficiency.

CONNECTION ACCESSORIES



Flanged connection for hoses

Ø

200/70 mm
200/100 mm
200/120 mm
200/150 mm
200/180 mm
200/200 mm

CODE

P12300/70
P12300/100
P12300/120
P12300/150
P12300/180
P12300/200



Y two ways flanged connection for hoses

200/70 - 70 mm
200/100 - 100 mm
200/120 - 120 mm

P12335/70
P12335/100
P12335/120



Flanged connection for arms

100 mm
160 mm

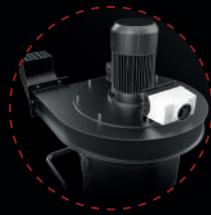
P12334/100
P12334



PUR - Antistatic polyurethane flexible hose

70 mm
100 mm
120 mm
150 mm
180 mm
200 mm

P11841/70
P11841/100
P12357/120
P12357/150
P12357/180
P12357/200



Electric Fan



M-Class filter



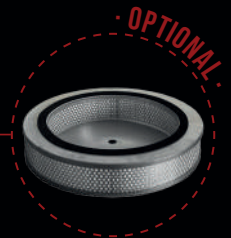
Manual filter shaker



65/100 Lt
bin capacity



Automatic filter
cleaning systems



HEPA filter (H13 or
H14)



70 - 100 - 120 - 150 mm
inlet with deflector



Power: 0,75 - 2,2 kW



Capacity: 65/100 Lt



Filtering surface: 24000 cm²



Dimensions: mm 660 X 800 X 1630 h

ATEX version available

		DF 075			DF 22			🇪🇺 DF 075 ATEX			🇪🇺 DF 22 ATEX		
Code		A1125			A1097			A1140			A1096		
ATEX Marking		-			-			II 3GD Ex htc IIIB T140°C Gc/Dc			II 3GD Ex htc IIIB T140°C Gc/Dc		
Power	kW - HP	0,75 - 1			2,2 - 3			0,75 - 1			2,2 - 3		
Voltage / Frequency	V Hz	400 50/60			400 50/60			400 50/60			400 50/60		
IP Insulation Class		55 F			55 F			55 F			55 F		
Maximum vacuum	mBar	185	200	180	350	350	350	185	200	180	350	350	350
Maximum air flow	m³/h	300	600	800	800	1000	1400	300	600	800	800	1000	1400
Inlet	Ømm	70	100	120	100	120	150	70	100	120	100	120	150
Noise level	dB(A)	70			73			70			73		
Bin capacity	Lt	65/100			65/100			65/100			65/100		
Dimensions	mm	660 X 800			660 X 800			660 X 800			660 X 800		
Height	mm	1630			1630			1630			1630		
Weight	kg	110			120			110			120		
Primary filter													
Surface	cm²	24000			24000			24000			24000		
Class EN 60335-2-69	IFA BGIAM-PES	M Class			M Class			M Class			M Class		
Media		Polyester			Polyester			Antistatic Polyester			Antistatic Polyester		
Filter cleaning		Manual			Manual			Manual			Manual		

DF 40

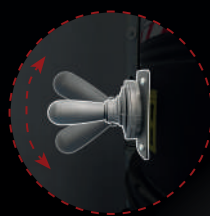
Code: **A1102**



Electric Fan



M-Class filter



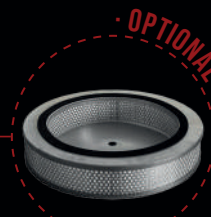
Manual filter shaker



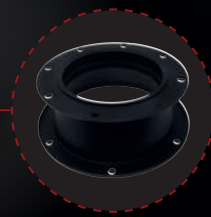
65/100 Lt
bin capacity



Automatic filter
cleaning systems



HEPA filter (H13 or
H14)



150 - 180 - 200 mm
inlet with deflector



Power: 4 kW



Capacity: 65/100 Lt



Filtering surface: 45000 cm²



Dimensions: mm 630 X 1100 X 2150 h

ATEX version available

		DF 40				🔊 DF 40 ATEX			
Code		A1102				A1103			
ATEX Marking		-				II 3GD Ex htc IIIB T140°C Ge/Dc			
Power	kW - HP	4 - 5,5				4 - 5,5			
Voltage / Frequency	V Hz	400 50/60				400 50/60			
IP Insulation Class		55 F				55 F			
Maximum vacuum	mBar	370	340	270	370	340	270		
Maximum air flow	m³/h	1500	2100	2700	1500	2100	2700		
Inlet	Ømm	150	180	200	150	180	200		
Noise level	dB(A)	73				73			
Bin capacity	Lt	65/100				65/100			
Dimensions	mm	630 X 1100				630 X 1100			
Height	mm	2150				2150			
Weight	kg	145				145			
Primary filter									
Surface	cm²	45000				45000			
Class EN 60335-2-69	IFA BGIAM-PES	M Class				M Class			
Media		Polyester				Antistatic Polyester			
Filter cleaning		Manual				Manual			

INDUSTRIAL FILTRATION



Via Venezia, 32 - 10088 Volpiano (TO)
Tel. +39 011 98.59.117

www.depureco.com
depureco@depureco.com

